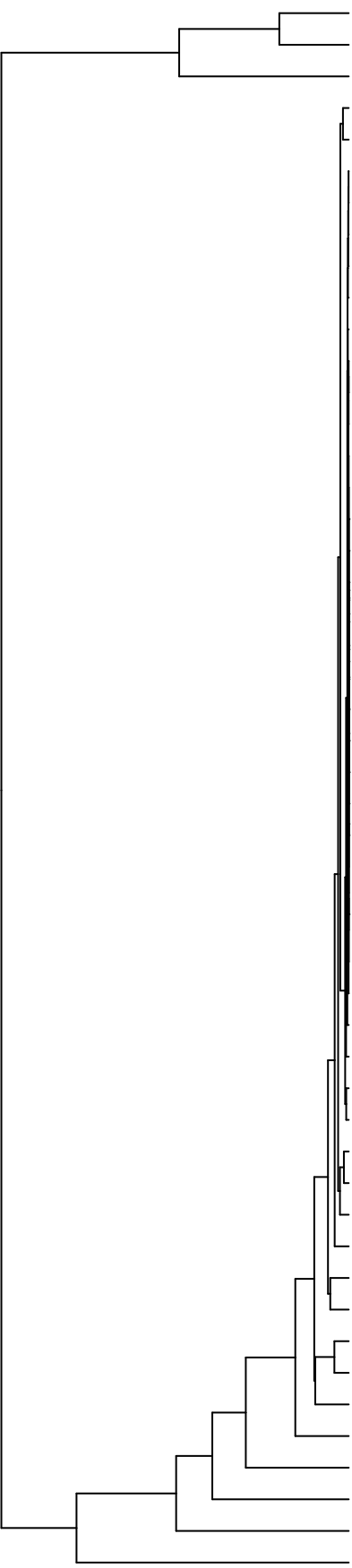


Group005
 Baseline
 Final B -PMA



- Veillonella
- Haemophilus
- Neisseria
- Eikenella
- Schaalia
- Catonella
- Oribacterium
- Stomatobaculum
- Saccharibacteria_(TM7)_[G-1]
- Solobacterium
- Actinomyces
- Lachnoanaerobaculum
- Lancefieldella
- Absconditabacteria_(SR1)_[G-1]
- Saccharibacteria_(TM7)_[G-6]
- Novosphingobium
- Mycolicibacterium
- Pseudomonas
- Delftia
- Acidovorax
- Lachnospiraceae_[G-2]
- Serratia
- Leifsonia
- Sphingobium
- Microbacterium
- Siccationidurans
- Agrobacterium
- Phyllobacterium
- Cutibacterium
- Acinetobacter
- Riemerella
- Capnocytophaga
- Lautropia
- Staphylococcus
- Leptotrichia
- Alloprevotella
- Gemella
- Rothia
- Prevotella
- Raoultella
- Aggregatibacter
- Granulicatella
- Campylobacter
- Porphyromonas
- Fusobacterium
- Salmonella
- Klebsiella
- Enterobacter
- Streptococcus
- Citrobacter

- F28914_S06
- F28914_S06
- F28914_S02
- F28914_S02
- F28914_S03
- F28914_S03
- F28914_S064
- F28914_S068
- F28914_S081
- F28914_S030
- F28914_S028
- F28914_S025
- F28914_S043
- F28914_S044
- F28914_S045
- F28914_S067
- F28914_S069
- F28914_S068
- F28914_S085
- F28914_S087
- F28914_S086
- F28914_S047
- F28914_S046
- F28914_S045
- F28914_S042
- F28914_S052
- F28914_S050
- F28914_S049
- F28914_S043
- F28914_S060
- F28914_S059
- F28914_S033
- F28914_S036
- F28914_S035
- F28914_S041
- F28914_S040
- F28914_S042
- F28914_S061
- F28914_S063
- F28914_S065

Genus

Samples